

## EDWARD HAGEDORN Exhibition List



**EDWARD HAGEDORN (1902-1982)**

*A Call to Arms*, c1935

Graphite over etching

8 7/8 x 14 7/8

(Inv# EH43)



**EDWARD HAGEDORN (1902-1982)**

*Air Raid*, c1935

Linocut

20 x 16 inches

(Inv# EH674)



**EDWARD HAGEDORN (1902-1982)**

*Anxiety*, c1935

Drypoint

19 1/2 x 12 1/2 inches

(Inv# EH23)



**EDWARD HAGEDORN (1902-1982)**

*Bent Blue Organic Form, Blue Sea*, 1936

Soft graphite, ink and watercolor

22 5/8 x 28 5/8 inches

(Inv# EH1089)



**EDWARD HAGEDORN (1902-1982)**

*Big Boots*, c1930-35

Etching

14 7/8 x 8 7/8 inches

(Inv# EH623)



**EDWARD HAGEDORN (1902-1982)**

*Blue Volcano*, c1930

Tempera on wove paper

18 x 24 3/4 inches

(Inv# EH1186)



**EDWARD HAGEDORN (1902-1982)**

*Bomb Thrower*, c1935

Linocut

20 x 15 3/4 inches

(Inv# EH663)



**EDWARD HAGEDORN (1902-1982)**

*California Coast*, c1935

Tempera on heavy paper

18 x 24

(Inv# EH363)



**EDWARD HAGEDORN (1902-1982)**

*California Landscape*, 1928

Oil on paper

11 7/8 x 9 inches

(Inv# EH325)



**EDWARD HAGEDORN (1902-1982)**

*Celebration*, c1935

Ink, watercolor, on laid paper

24 x 18 inches

(Inv# EH1110)



**EDWARD HAGEDORN (1902-1982)**

*Clouds*, c1930-35

Linocut

8 3/4 x 14 inches

Unframed

(Inv# EH320)



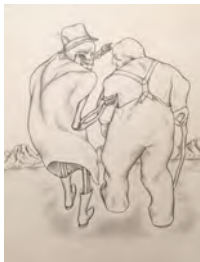
**EDWARD HAGEDORN (1902-1982)**

*Dark Aqua Mountains, Volcano Erupting*,  
1935

Soft Graphite, ink, watercolor

22 5/8 x 28 5/8

(Inv# EH458)



**EDWARD HAGEDORN (1902-1982)**

*Death and an Old Man*, c1928

Graphite

25 x 20 inches

(Inv# EH58)



**EDWARD HAGEDORN (1902-1982)**

*Death Overtakes a Ship*, c1935

Etching and drypoint

15 7/8 x 21 3/4 inches

(Inv# EH1366)



**EDWARD HAGEDORN (1902-1982)**

*Depth bomb*, c1935

Etching and drypoint

12 x 15 3/4

(Inv# EH647)



**EDWARD HAGEDORN (1902-1982)**

*Disaster at Sea*, c1935

Etching and drypoint

8 7/8 x 14 7/8 inches

(Inv# EH1264)



**EDWARD HAGEDORN (1902-1982)**

*Emissaries*, c1935  
Drypoint  
15 3/4 x 12 inches  
(Inv# EH1716)



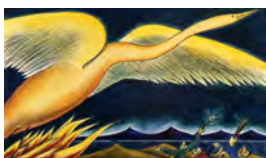
**EDWARD HAGEDORN (1902-1982)**

*Female Nude*, c1935  
Tempera  
18 x 24 inches  
(Inv# EH939)



**EDWARD HAGEDORN (1902-1982)**

*Female Nude Back View*, c1935  
Tempera  
24 x 18 inches  
(Inv# EH947)



**EDWARD HAGEDORN (1902-1982)**

*Flight of the Phoenix*, c1945  
Watercolor, ink  
13 1/2 x 20 1/8 inches  
(Inv# EH1312)



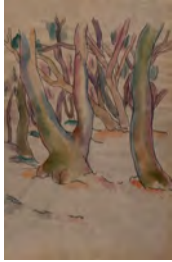
**EDWARD HAGEDORN (1902-1982)**

*Going Down*, c1935  
Linocut  
8 1/2 x 22 inches  
(Inv# EH662)



**EDWARD HAGEDORN (1902-1982)**

*Green Mountains, Pale Yellow Bolt*, 1935  
Soft Graphite, ink, and watercolor  
28 5/8 x 22 5/8 inches  
(Inv# EH459)



**EDWARD HAGEDORN (1902-1982)**

*Grove of Trees*, c1925

Watercolor and ink on wove paper

15 x 10

(Inv# EH1146)



**EDWARD HAGEDORN (1902-1982)**

*Icarus*, c1930

Etching, plate tone, drypoint

15 7/8 x 10 7/8 inches

(Inv# EH1392)



**EDWARD HAGEDORN**

*Jacob Wrestling With The Angel*, c1930

Drypoint

17 x 13 inches

(Inv# EH3892)



**EDWARD HAGEDORN (1902-1982)**

*Jonah Thrown Overboard*, c1945

Watercolor, ink

15 x 22 inches

(Inv# EH1594)



**EDWARD HAGEDORN (1902-1982)**

*Lavender Mountains, Green Sea, Rising Moon*,  
1935

Graphite, ink, pastel, watercolor

20 x 25 1/4 inches

(Inv# EH453)



**EDWARD HAGEDORN (1902-1982)**


*Lazarus*, c1945

Watercolor, ink

20 3/8 x 18 1/8 inches

(Inv# EH1318)



**EDWARD HAGEDORN** (1902-1982)  
*Leaving the Bath, after Degas* , c1928  
Graphite, charcoal and watercolor  
7 1/8 x 8 1/4  
(Inv# EH600)



**EDWARD HAGEDORN** (1902-1982)  
*Lifeboats*, c1935  
Etching & drypoint  
13 x 16"  
(Inv# EH1758)



**EDWARD HAGEDORN** (1902-1982)  
*Lightning*, c1925  
Linocut  
16 x 20  
(Inv# EH659)



**EDWARD HAGEDORN** (1902-1982)  
*Lightning Over the Palisades*, 1930-35  
Black ink and graphite on paper  
20 x 25 inches  
(Inv# EH534)



**EDWARD HAGEDORN** (1902-1982)  
*Lightning, Red Aura*, 1935  
Crayon, watercolor on paper  
19 x 25 inches  
(Inv# DFA1404)



**EDWARD HAGEDORN** (1902-1982)  
*Modernist California Hills*, c1925  
Pastels on brown paper  
14 x 15  
(Inv# EH1147)





**EDWARD HAGEDORN** (1902-1982)  
*Moon Over the Palisades/Outer Space*, 1931  
Graphite, ink wash  
18 x 22 1/2 inches  
(Inv# EH561)



**EDWARD HAGEDORN** (1902-1982)  
*Mountain Range and Volcano*, c1928  
Monotype in black ink on paper  
10 5/8 x 17 inches  
(Inv# EH41)



**EDWARD HAGEDORN** (1902-1982)  
*Night Attack*, c1925  
Etching and drypoint  
8 3/4 x 14 7/8 inches  
(Inv# EH628)



**EDWARD HAGEDORN** (1902-1982)  
*Noah building the Ark*, c1945  
Watercolor and ink  
20 1/4 x 13 1/4 inches  
(Inv# EH1603)



**EDWARD HAGEDORN** (1902-1982)  
*Nude*, 1929  
Oil on "Pabco wall board"  
22 1/4 x 32  
(Inv# EH540)

**EXHIBITED:**

First Annual Spring Exhibition of the California Palace of the Legion of Honor,  
April 3 through April 30, 1946

**PROVENANCE:**

The artist  
Estate of the artist  
B. Sampson



**EDWARD HAGEDORN (1902-1982)**

*Nude Back View, c1930*

Tempera

19 x 12 1/2 inches

(Inv# EH957)



**EDWARD HAGEDORN (1902-1982)**

*Nude Back View, c1935*

Tempera

24 x 18 inches

(Inv# EH945)



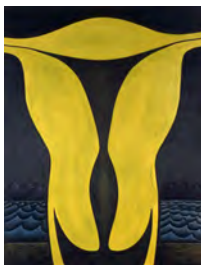
**EDWARD HAGEDORN (1902-1982)**

*Nude Torso Arms Raised, c1935*

Tempera

19 x 12 1/2 inches

(Inv# EH960)



**EDWARD HAGEDORN (1902-1982)**

*Organic Form, Blue Sea, Purple Mountains, 1935*

Soft graphite, ink and watercolor

28 5/8 x 22 5/8 inches

(Inv# EH1074)

EXHIBITED:

Exhibited by James Steward, Curator, UC Berkeley Art Museum Matrix Gallery, Summer, 1996



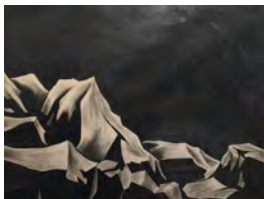
**EDWARD HAGEDORN (1902-1982)**

*Organic Form, Green Sea, Waves, 1935*

Soft graphite, ink and watercolor

22 1/8 x 30 inches

(Inv# EH1072)



**EDWARD HAGEDORN (1902-1982)**

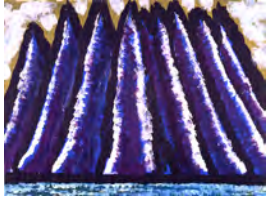
*Palisades at Night/Outer Space, 1930-35*

Black ink and graphite on paper

20 x 25 inches

(Inv# EH533)





**EDWARD HAGEDORN (1902-1982)**

*Pinnacles*, c1935

Tempera on heavy paper

18 x 24 inches

(Inv# EH382)

EXHIBITED:

Exhibited: Exhibited UC Berkeley Art Museum Matrix Gallery, Summer 1996,  
James Steward, Curator



**EDWARD HAGEDORN (1902-1982)**

*Puzzled*, c1935

Linocut

27 x 17 inches

(Inv# EH655)



**EDWARD HAGEDORN (1902-1982)**

*Reclining Nude*, c1925

Watercolor and ink

12 1/2 x 19 inches

(Inv# EH427)



**EDWARD HAGEDORN (1902-1982)**

*Reclining Female Nude*, c1935

Tempera

19 x 12 1/2 inches

(Inv# EH959)

EXHIBITED:

Hollis Taggart Gallery, May, 1998--Expressionism in America



**EDWARD HAGEDORN (1902-1982)**

*Samson*, c1930

Graphite and ink

22 x 17 inches

(Inv# EH633)



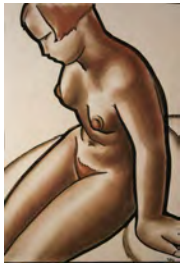
**EDWARD HAGEDORN (1902-1982)**

*Sanguine Nude*, c1927

Sanguine crayon, ink

22 x 17 inches

(Inv# EH3826)



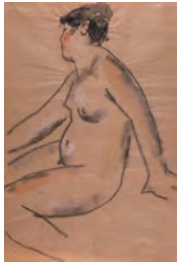
**EDWARD HAGEDORN (1902-1982)**

*Seated Female Nude*, 1928

Chalk and ink

18 7/8 x 12 7/8 inches

(Inv# EH2480)



**EDWARD HAGEDORN (1902-1982)**

*Seated Female Nude*, c1925

Pastels and watercolor

17 7/8 x 12 inches

(Inv# EH1129)



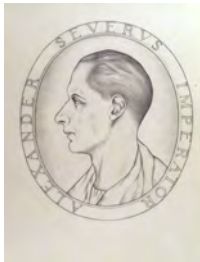
**EDWARD HAGEDORN (1902-1982)**

*Self portrait and Model, Blue Chair*, c1925

Ink and watercolor on tan paper

18 3/4 x 13 1/2 inches

(Inv# EH416)



**EDWARD HAGEDORN (1902-1982)**

*Self Portrait as 'Alexander Severus Imperator,'*

*left profile in a medallion*, c1925

Graphite

21 x 16

(Inv# EH439)



**EDWARD HAGEDORN** (1902-1982)  
*Six Comets, Five Mountains*, 1938  
Graphite, ink wash  
28 3/4 x 22 1/2  
(Inv# EH1031)



**EDWARD HAGEDORN** (1902-1982)  
*Study for Torpedoed*, c1925  
Graphite  
17 x 21  
(Inv# EH634)



**EDWARD HAGEDORN** (1902-1982)  
*Tank*, c1935  
Brush and ink  
17 1/2 x 25 1/4 inches  
(Inv# EH1181)



**EDWARD HAGEDORN** (1902-1982)  
*The Crowd/Seven Figures*, c1925  
Oil monotype on thin paper  
10 7/8 x 12 1/2"  
(Inv# EH1008)



**EDWARD HAGEDORN** (1902-1982)  
*The Crowd/Two Figures*, c1925  
Oil monotype on thin paper  
12 7/8 x 9 1/2"  
(Inv# EH1007)



**EDWARD HAGEDORN** (1902-1982)  
*The Drummer*, c 1935  
Etching  
14 3/4 x 8 3/4 inches  
(Inv# EH1180)



**EDWARD HAGEDORN (1902-1982)**

*The Little Fellow*, c1935

Linocut

17 x 27 inches

(Inv# EH654)



**EDWARD HAGEDORN (1902-1982)**

*The Monster*, c1930

Drypoint

13 7/8 x 9 5/8 inches

(Inv# EH681)



**EDWARD HAGEDORN (1902-1982)**

*The Rainbow*, c1935

Linocut

9 5/8 x 17 5/8 inches

(Inv# EH309)



**EDWARD HAGEDORN (1902-1982)**

*The Rising Moon*, c1935

Linocut

27 x 17 inches

(Inv# EH1179)



**EDWARD HAGEDORN (1902-1982)**

*The Sower*, c1935

Linocut

22 1/4 x 8 1/2 inches

(Inv# EH300)

EXHIBITED:

Exhibited, UC Berkeley Art Museum Matrix Gallery, Summer, 1996, Curator, James Steward



**EDWARD HAGEDORN (1902-1982)**

*The Thinker*, c1930

Etching

11 3/4 x 7 1/4

(Inv# EH2149)



**EDWARD HAGEDORN (1902-1982)**

*The Web*, c1937

Etching

8 3/4 x 14 7/8

(Inv# EH1272)



**EDWARD HAGEDORN (1902-1982)**

*"They Spruce Themselves Up," after Goya, Los Caprichos plate #51, "Se Repulen"*, c1930

Mixed media on wove paper

25 3/8 x 20

(Inv# EH472)



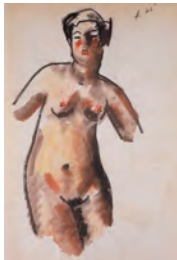
**EDWARD HAGEDORN (1902-1982)**

*Three Bare Trees, Purple Mountains*, c1935

Soft graphite, ink, watercolor

22 5/8 x 28 5/8 inches

(Inv# EH1093)



**EDWARD HAGEDORN (1902-1982)**

*Three quarter Nude*, 1926

Watercolor and pastel

19 x 12 1/2 inches

(Inv# EH424)



**EDWARD HAGEDORN (1902-1982)**

*Torpedoed*, c1930-35

Drypoint

12 3/4 x 16 1/2 inches

(Inv# EH3896)



**EDWARD HAGEDORN (1902-1982)**

*Turquoise Volcano* ☒, c1935

Tempera on heavy paper

17 7/8 x 24

(Inv# EH369)

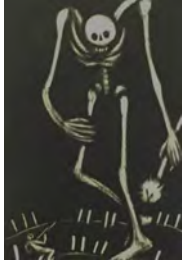
LITERATURE:

Edward Hagedorn, p. 57, plate 3 (published backwards)



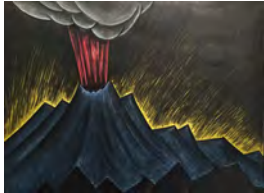
**EDWARD HAGEDORN (1902-1982)**

*Two Icebergs*, 1938  
Graphite, ink wash  
22 1/2 x 28 3/4 inches  
(Inv# EH1034)



**EDWARD HAGEDORN (1902-1982)**

*Unequal Combat*, c1935  
Etching and aquatint  
13 3/4 x 9 3/8 inches  
(Inv# EH1166)



**EDWARD HAGEDORN (1902-1982)**

*Volcano/Red Eruption/Yellow Light*, 1935  
Watercolor, ink, black crayon  
22 1/2 x 28 1/2 inches  
(Inv# EH15)



**EDWARD HAGEDORN (1902-1982)**

*Waiting*, c1935  
Linocut  
15 7/8 x 22 inches  
(Inv# EH597)



**EDWARD HAGEDORN (1902-1982)**

*Whirlwind*, c1935  
Drypoint  
17 3/4 x 15 1/4 inches  
(Inv# EH1256)



**EDWARD HAGEDORN (1902-1982)**

*Yellow Moon*, c1935  
Tempera on heavy paper  
18 3/4 x 24 3/4 inches  
(Inv# EH380)





**EDWARD HAGEDORN (1902-1982)**

*You*, c1935

Linocut

19 3/4 x 16 inches

(Inv# EH293)