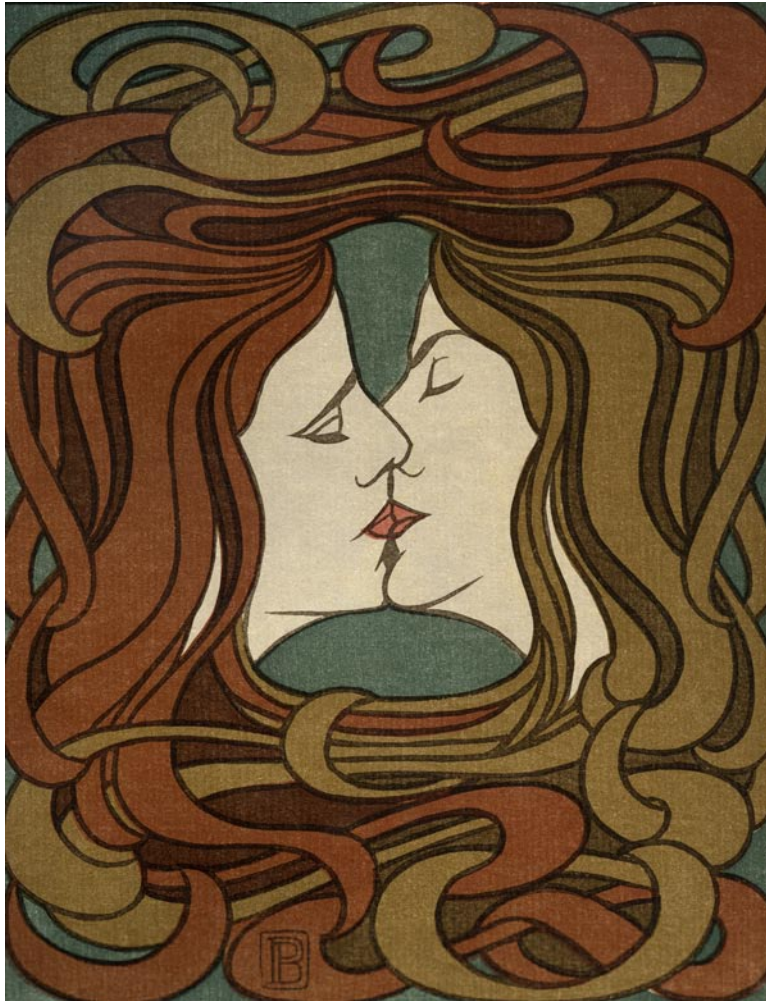


PAN

A Graphic Arts Time Capsule of Europe
1895-1900



List of Works with Images 80 Works in Total

Organized by Landau Traveling Exhibitions, Los Angeles, CA,
in association with
Denenberg Fine Arts, West Hollywood, CA.

BEARDSLEY, AUBREY (English 1872-1898)

Isolde

Line etching and printed color



BEHRENS, PETER (German 1868-1940)

Ohne Titel (Der Kuss)/Untitled (The Kiss)

6-color woodcut, 1898

52902-6



BEHRENS, PETER (German 1868-1940)

Winterlandschaft/Winter Landscape

Woodcut, 1899

53004-4



\
DENIS, MAURICE (French 1870-1943)
Ohne Titel (Mutter und Kind)/Untitled (Mother and Child)
Lithograph, 1897
52803-7



DUMONT, MAURICE (French 1869-1899)
Sappho
Glyptograph (linoleum cut), 1895
52601-4



ECKMANN, OTTO (German 1865-1902)
Nachtreier/Night Herons
Color lithograph, 1895
52602-6



ECKMANN, OTTO (German 1865-1902)

Schwertlilien/Iris

Color woodcut, 1895

52603-2



ECKMANN, OTTO (German 1865-1902)

Wenn der Frühling kommt/When Spring Comes

Color woodcut, circa 1895

52703-8



EDMOND-CROSS, HENRI (né Henri-Edmond-Joseph Delacroix , French 1856-1910)

In den Champs-Elysées/On the Champs-Élysées

Color lithograph, 1898

52901-5



GEYGER, ERNST MORITZ (German 1861-1941)

Der Riese./The Giant

(with text by Friederich Nietzsche)

Etching, 1895

52602-3



HALM, PETER (German 1854-1923)

Ohne Titel (Pappeln)/Untitled (Poplars)

Etching, 1895

52604-1

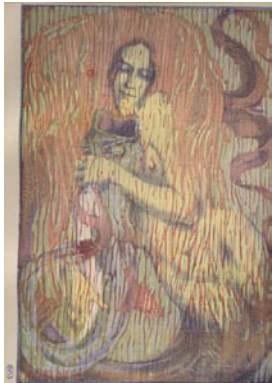


HÉRAN, HENRI (Pseudonym of Paul Hermann, German 1864-1940)

Spielendes Meerweib/Frolicking Mermaid

Color woodcut, 1897

52804-4



HÖNEMANN, MARTIN (German 1858—c. 1925?)
Mutter und Kind/Mother and Child
Wood engraving, after Dora Hitz, 1891/96
52701-5



ILLIES, ARTUR (German 1870-1953)
Mondaufgang/Setting Moon
Color etching, 1896
52704-2



KAMPMANN, GUSTAV
Steigende Nebel/Rising Fog
Lithograph, 1896
52703-3



KAMPMANN, GUSTAV (German 1859-1917)

Thalmühle (Austria)

Color lithograph, 1898

52903-4



KAMPMANN, GUSTAV (German 1859-1917)

Ballwolken/Ball Clouds

Color lithograph, 1899

53003-2

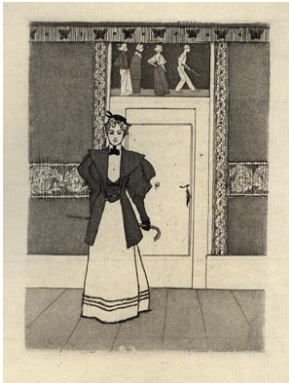


KIRCHNER, EUGEN (German 1865-1938)

Ohne Titel (*Dame mit Spazierstock*)/Untitled (Woman Dressed to Go Out)

Etching, 1895

52604-4



KIRCHNER, EUGEN (German 1865-1938)

November

Etching, 1896

52703-6



KLINGER, MAX (German 1857-1920)

Der Philosoph (aus "Vom Tode, II")/The Philosopher (from "Of Death, II")

Etching

52602-4



KLINGER, MAX (German 1857-1920)

Erinnerung/Memory

Etching, 1896

52702-1



KLOTZ, ERNST (German 1863-?)
Mädchenkopf/Head of a Young Woman
Color etching, 1895
52603-3



KLOTZ, ERNST (German 1863-?)
Zwei Studienköpfe/Two Studies of Heads
Etching, 1895
52603-4



KOLLWITZ, KÄTHE (German 1867-1945)
Begrüssung/Welcoming
Etching, 1892
53001-3



KÖPPING, KARL (German 1848-1914)
Köppingsche Ziergläser/Köpping Ornamental Glasses
Etching, 1896
52703-11



KRÜGER, ALBERT (German 1858-?)
Knieender Akt (nach Degas)/Kneeling Nude (after Degas)
Etching printed in red ink, 1896
52801-3



KRÜGER, ALBERT (German 1858-?)
Jacob Burckhardt
2-color woodengraving, 1897
52902-5

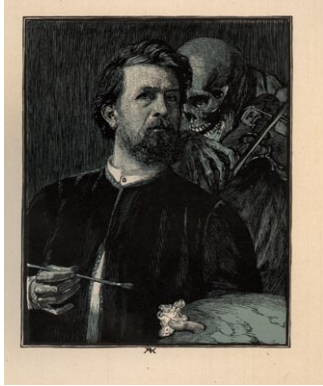


KRÜGER, ALBERT (German 1858-?)

Böcklin's Selbstbildnis mit Tod/Böcklin's Self Portrait with Death

Wood engraving. 1898

52904-2



LEISTIKOW, WALTER (German 1865-1908)

Baumgruppe/Grove of Trees

Etching, 1896

52701-2

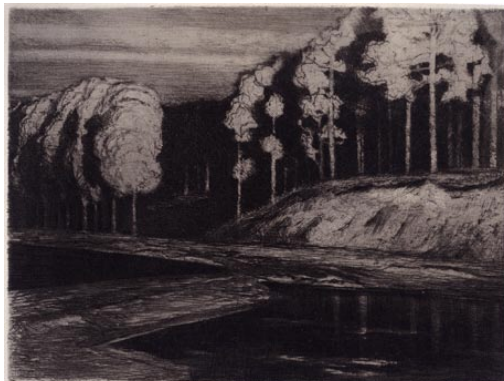


LEISTIKOW, WALTER (German 1865-1908)

Waldsee/Forest Lake

Etching, 1896

52801-1



LEISTIKOW, WALTER (German 1865-1908)

Kraniche/Cranes

Color lithograph, 1898

52902-3



LEISTIKOW, WALTER (German 1865-1908)

Das Haus/The House

Etching, 1899

53004-2



LÉVEILLÉ, ANDRÉ (French 1880-1963)

Bastien Lepage

Wood engraving, 1896

52801-4



LIEBERMANN, MAX (German 1847-1935)
Kellergarten in Rosenheim/Keller Park in Rosenheim
Etching, 1895
52601-3



LIEBERMANN, MAX (German 1847-1935)
Theodor Fontane
Lithograph, 1896
52701-1



LIEBERMANN, MAX (German 1847-1935)
Holzsuchende Frauen/Women Gathering Wood
Lithograph printed in gray ink, 1899
53004-1



LIEBL, WILHELM (German 1844-1900)
Bildnis einer alten Frau/Portrait of an Old Woman
Etching, 1897
52802-1



LUCE, MAXIMILIEN (French 1858-1941)
Hochöfen/Blast Furnace
Color lithograph, 1898
52901-2



LÜHRIG, GEORG (German 1868-1957)
Freya und die Riesen/Freya and the Giants
Color lithograph, 1896
52702-7



MAURIN, CHARLES (French 1856-1914)

Mutter und Kind/Mother and Child

Etching, 1896

52701-7



MORDANT, DANIEL (French 1853-1914)

Le Sommeil (d'après Eugène Carrière)/Sleep (after Eugène Carrière)

Engraving (incorrectly called an etching in the catalogue), 1896

53002-1

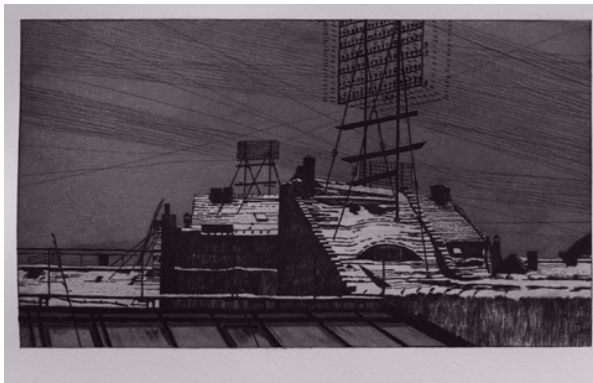


MÜLLER, RICHARD (Austrian 187-1954)

Schneedächer mit Telefonstand/Snowy Roof with Telephone Equipment

Etching, 1899

53002-3



NAAGER, FRANZ (German 1870-1942)
Ritter im Gruenen/Rider in the Forest
(with poem by Gustav Falke)
Color lithograph, 1895
52603-1



NICHOLSON, WILLIAM (British 1872-1949)
Alte Frau/Old Woman
Color woodcut, 1897
52803-4



OLDE, HANS JOHANN WILHELM (German 1855-1917)
Klaus Groth
Etching, 1896
52704-1

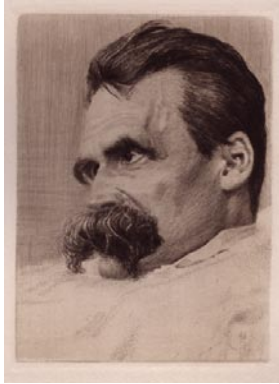


OLDE, HANS JOHANN WILHELM (German 1855-1917)

Friedrich Nietzsche

Etching, 1899

53004-3



ONASCH, THEODORA (German---)

Ornament

Color linocut, 1899



ONASCH, THEODORA (German---)

Ornament

Color linocut, 1899



ORLIK, EMIL (Czech 1870-1932)

Kurzweil/Playtime

Etching, 1897

52803-5

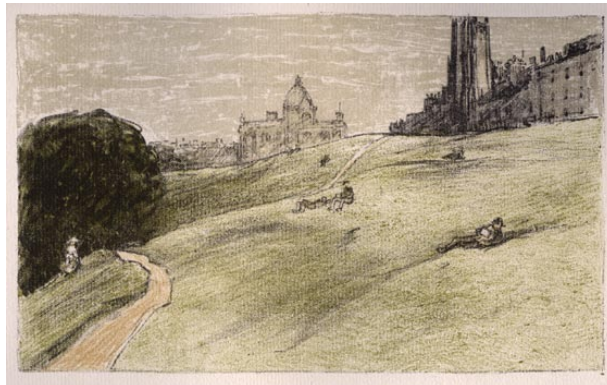


ORLIK, EMIL (Czech 1870-1932)

Edinburgh

Color lithograph, 1899

53002-2



PENNELL, JOSEPH (American 1860-1926)

Küstenlandschaft/Coastal Landscape

Lithograph, 1896

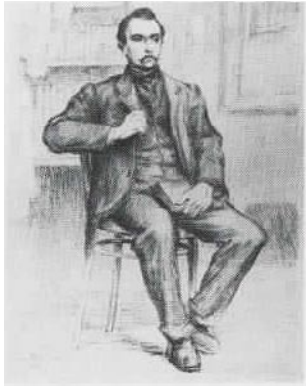
52704-4



PETITJEAN, HIPPOLYTE (French 1854-1929)
Dekorativer Entwurf/Study for a decorative panel
Color lithograph, 1898
52901-4



PETITJEAN, HIPPOLYTE (French 1854-1929)
Maurice Maeterlinck
Lithograph, 1898
52804-5



RODIN, AUGUSTE (French 1840-1917)
Antonin Proust
Etching, 1897
52803-8



ROPS, FELICIEN JOSEPH VICTOR (Belgian 1833-1898)

Oute Kat

Soft ground etching, 1895

52601



ROTHENSTEIN, SIR WILLIAM (British 1872-1945)

Walter Crane

Lithograph, 1896

52704-3



SEURAT, GEORGES after (French 1859-1891)

Nude, Back View

Photolithograph, 1899

pp. 54/55



SIGNAC, PAUL (French 1863-1935)

Abend (Le Soir—La Jetée de Flassingue)/Evening, The Pier at Flassingue

Color lithograph, 1898

52901-1



SKARBINA, FRANZ (German 1849-1910)

Droschke im Regen/Wagon in the Rain

Color lithograph, 1896

52701-4



STAUFFER-BERN, KARL (Swiss 1857-1891)

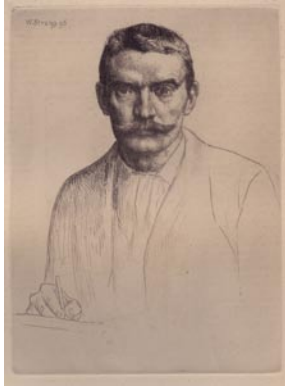
Peter Halm

Etching, 1895

52603-5



STRANG, WILLIAM (Scottish 1859-1921)
Selbstporträt/Self Portrait
Etching, 1895
52704-5



THOMA, HANS (German 1839-1924)
Der Geiger/The Fiddler
Color lithograph, 1895
52602-5



THOMA, HANS (German 1839-1924)
Landschaft/Landscape
Color lithograph (on aluminum plate), 1896
52703-9



TOULOUSE-LAUTREC, COMTE HENRI DE (French 1864-1901)
Mademoiselle Marcelle Lender en Buste/Bust of Miss Marcelle Lender
8-color lithograph, 1895
52603-6



VALLOTON, FÉLIX EDOUARD (Swiss 1865-1925)
Porträt von Robert Schumann/Portrait of Robert Schumann
Woodcut, 1893
52601-2



VAN DE VELDE, HENRY (Belgian 1863-1957)
Plakat (Tropon)/Poster (Tropon)
Color lithograph, 1898
Note: “Eiweiss Nahrung” means “Protein Food”
52901-6



VAN RYSELBERGHE, THÉO (Belgian 1862-1926)

Henri de Regnier

Lithograph, 1898

52901-3



VELDHEER, JACOB GERARD

Ohne Titel (Kleinstadt) Untitled (Small Town)

Woodcut printed in olive ink, 1895

52604-3



VELDHEER, JACOB GERARD (Dutch 1866-1954)

Of Macken/In Macken

Woodcut, 18953001-4

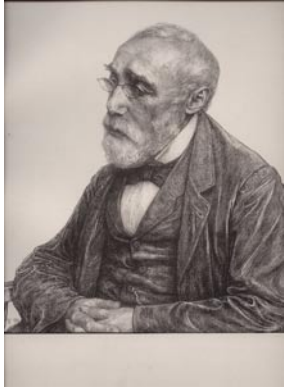


VETH, JAN PIETER (Dutch 1864-1925)

Josef Israels

Lithograph, 1896

52802-4



VOLZ, WILHELM (German 1855-1901)

Salomé

Color lithograph, 1896

52703-1



VOLZ, WILHELM (German 1855-1901)

Aufzug und Tanz der Nymphen/Dance of the Nymphs

2-color lithograph, 1898

52902-4



VON HOFMANN, LUDWIG (German 1861-1945)

Adam and Eve

Color lithograph, 1896

52801-2



VON HOFMANN, LUDWIG (German 1861-1945)

Sonnige Tage/Sunny Day

Color lithograph, 1897

52804-1



VON KALCKREUTH, LEOPOLD GRAF (German 1855-1928)

Heimkehr/Journey Home

Lithograph printed in dark blue ink, 1897

52804-3



VON KALCKREUTH, LEOPOLD GRAF (German 1855-1928)

Ninnenei und Muhme/Ninnenei and Auntie

Etching, 1899

53003-1



VON STUCK, FRANZ (German 1863-1928)

Pan cover illustration

Woodcut, 1895



VON VOLKMANN, HANS RICHARD (1860-1927)

Kapelle (Eifel)/Chapel (Eifel)

Color lithograph, 1898

52903-2



ZORN, ANDERS (Swedish 1860-1920)

Porträt/Portrait

(Mme Simon II)

Etching

52602-2



ZORN, ANDERS (Swedish 1860-1920)

Paul Verlaine (II)

Etching, 1895

52701-6

